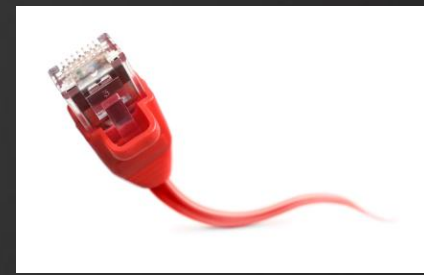




What's New in 2010 Installation & Licensing

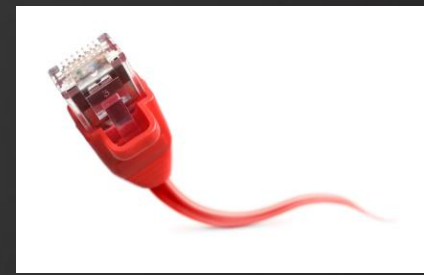
Tom Stoeckel
Global Technical Lead, Product Support

Online License Transfer (OLT)



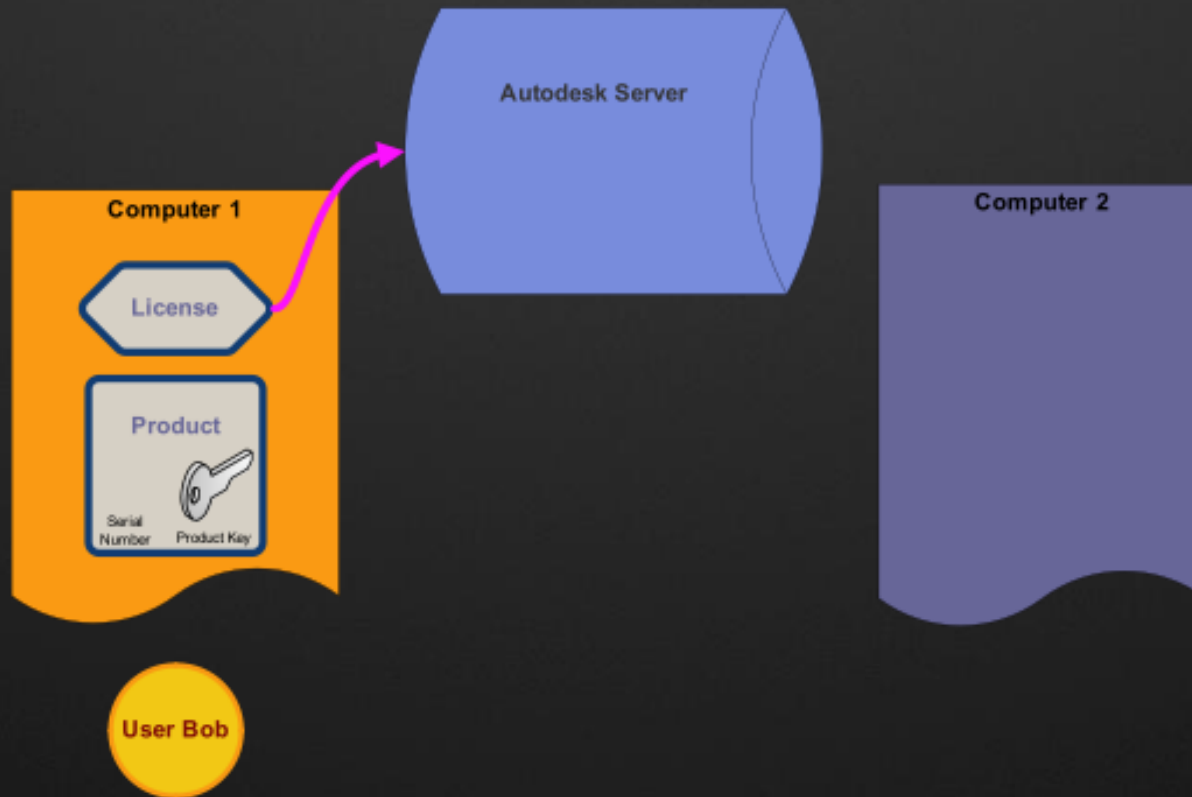
- Allows licenses to be moved between machines
- Replaces the Portable License Utility (PLU) used in previous releases
- License Transfer Utility is product-specific
- Standalone licenses only
- Public export
 - Tied to product serial number only
 - Can be imported by anyone running the same serial number
- Private export
 - Tied to login and serial number
 - Can only be imported by same login credentials and serial number
 - Automatically becomes public after 14 days

Online License Transfer Process

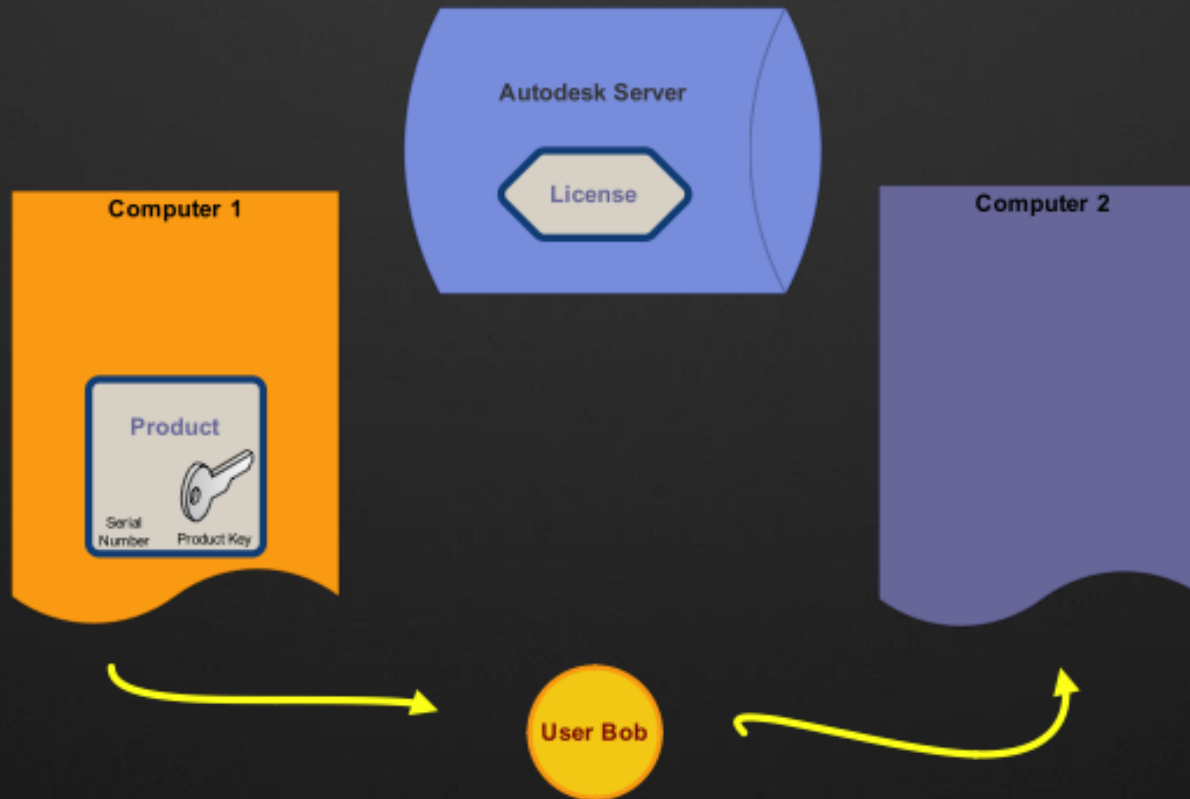
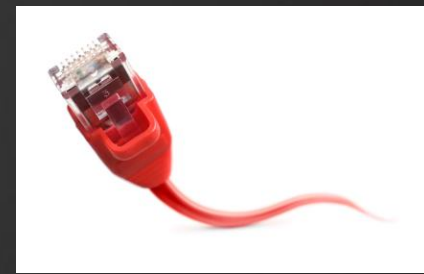


- Start the License Transfer Utility for the product license to be exported
- Log in to Autodesk
- Choose public or private export (default is private)
- License is exported to servers at Autodesk
- At the destination computer, start the License Transfer Utility to import
- Log in to Autodesk
- Import the previously exported license

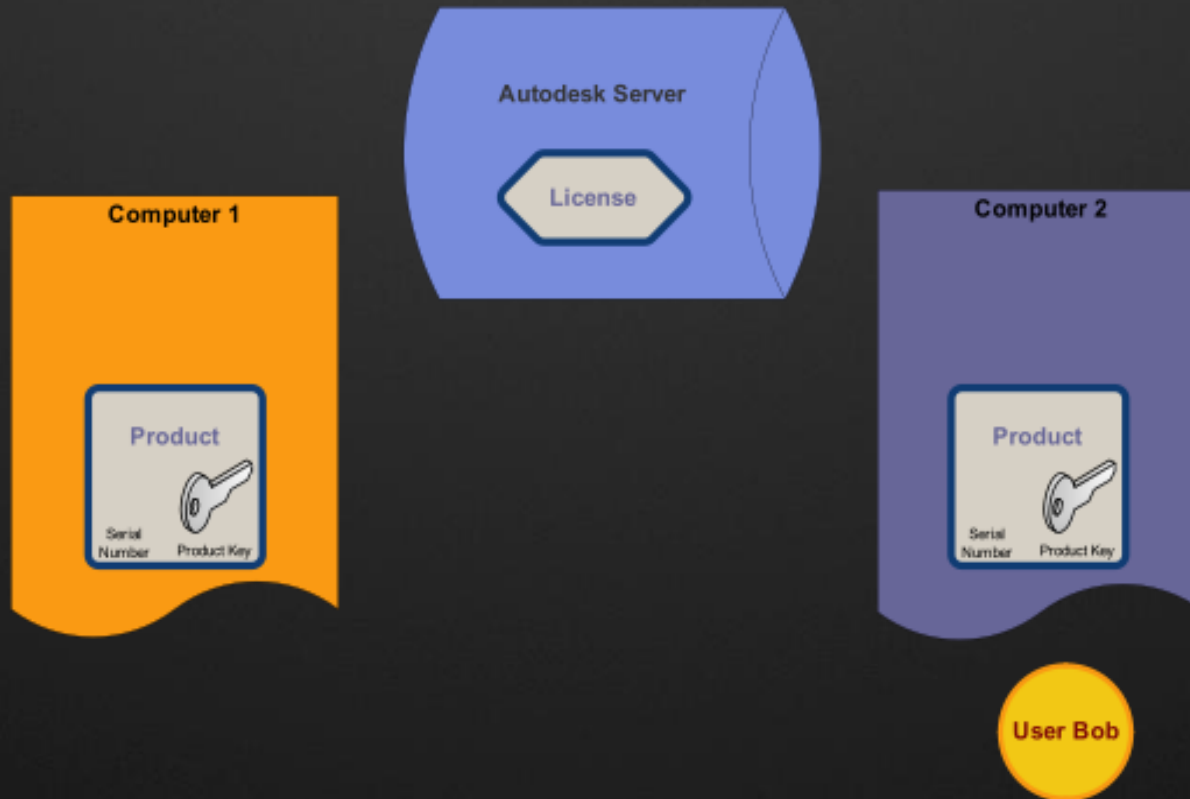
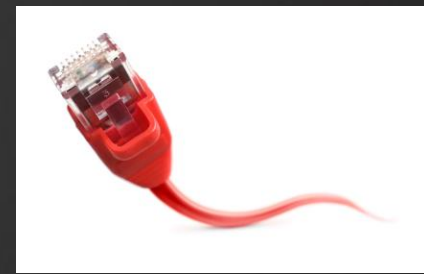
License Transfer - Export the License



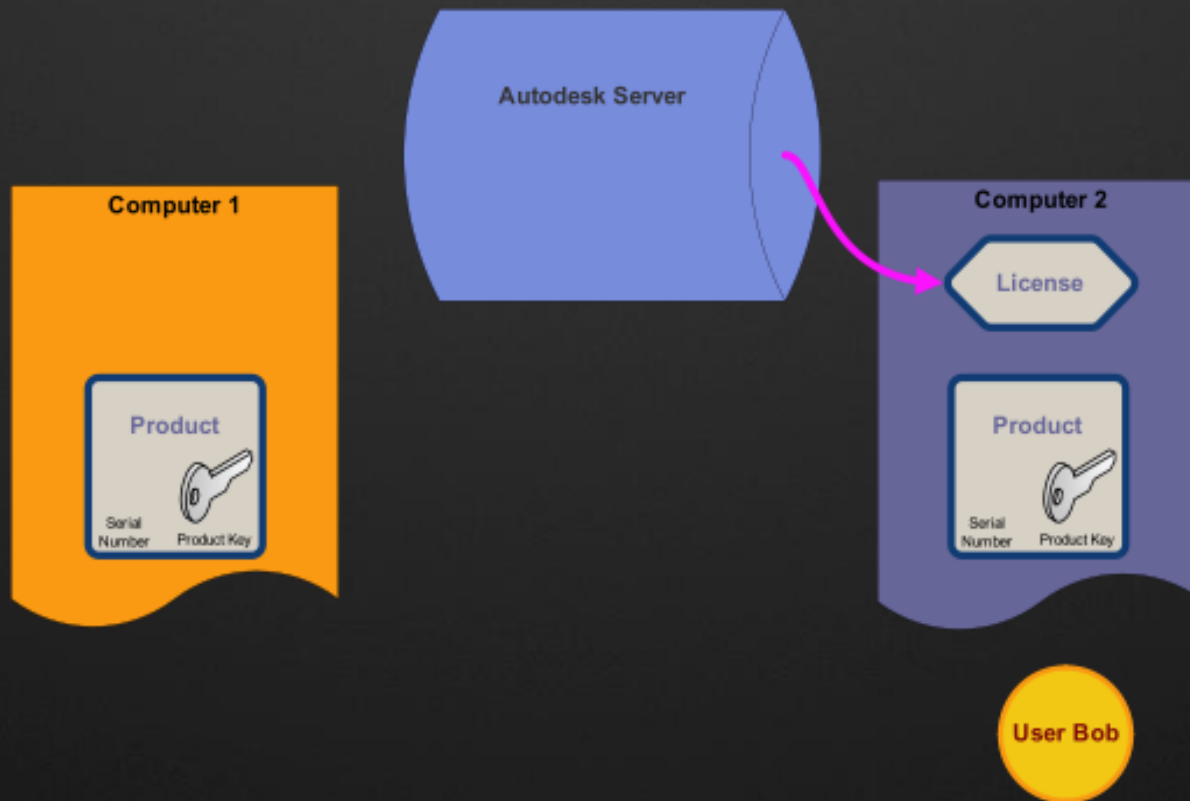
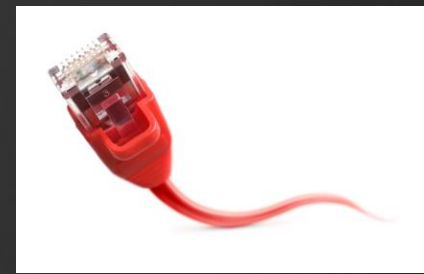
License Transfer - Move to a Computer



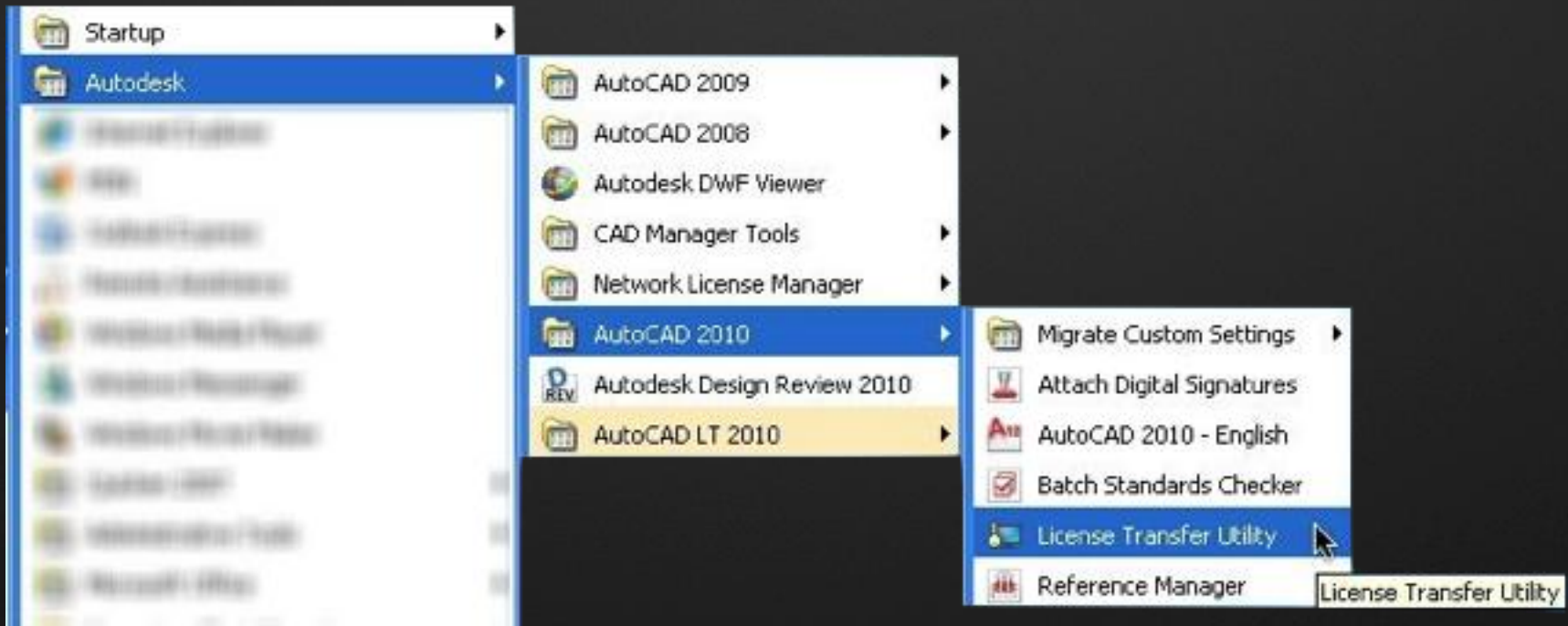
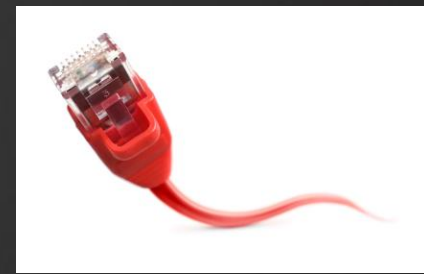
License Transfer - Install the Product



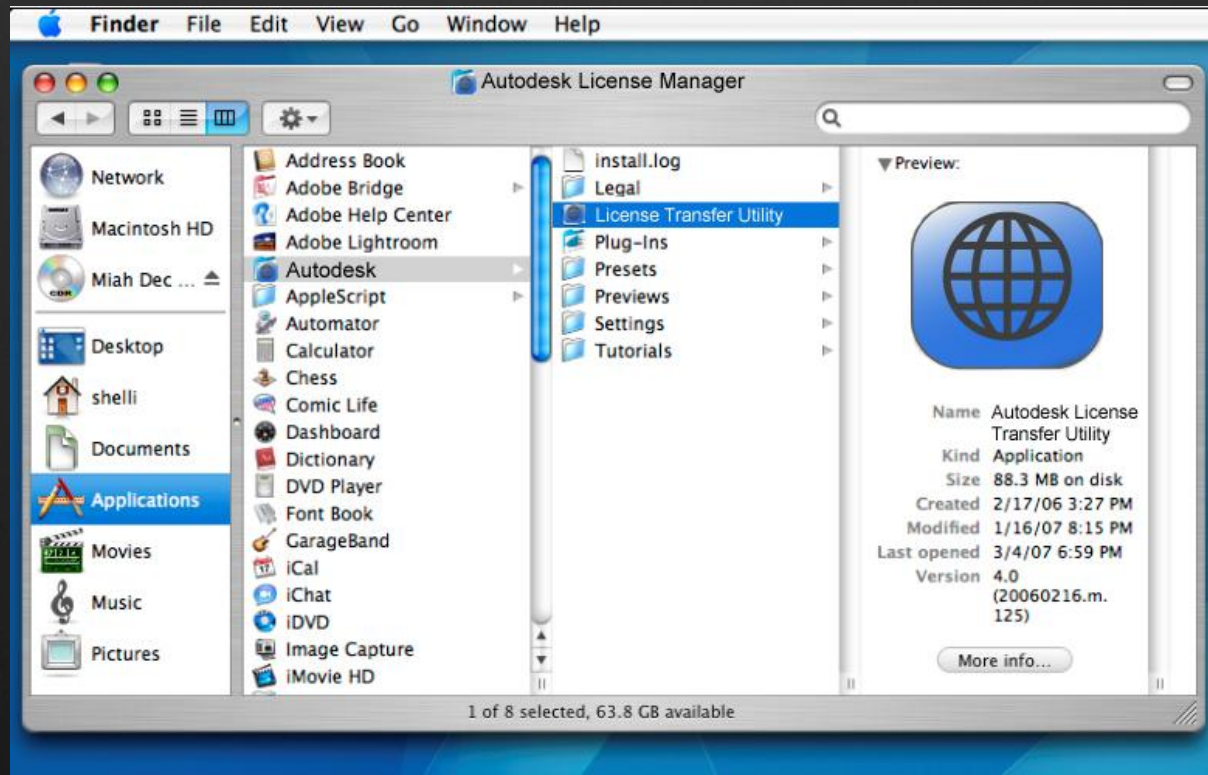
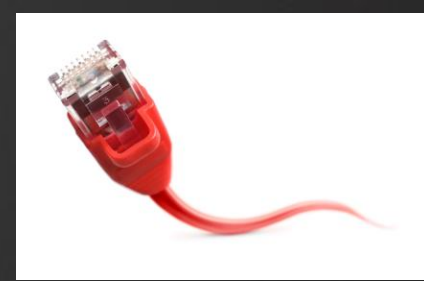
License Transfer - Import the License



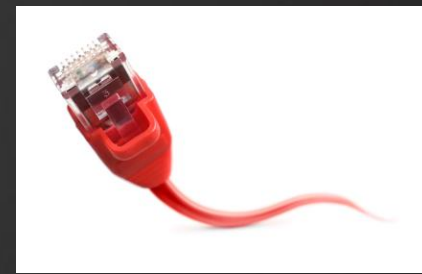
OLT – License Transfer Utility



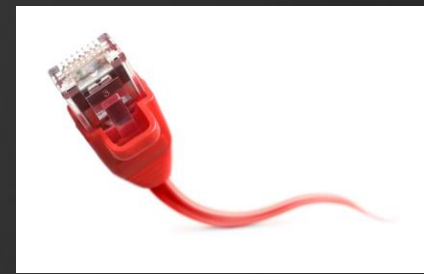
OLT – License Transfer Utility on the Mac



OLT – Exporting a license



OLT Export – Log In



Register Today

Autodesk

Log In

Are you a New User? Click "Create User ID Now".

Please enter your User ID, Password and click "Log In" to access the Autodesk service you requested. You can use your existing Subscription Center or Partner Center User ID and Password.

Registered Autodesk users are able to access various Autodesk services including:

- Product Registration and Activation
- Subscription Center
- Partner Center
- Web Support

Users from Japan with an existing Contact ID, please [click here](#).

The information you provide will be used by Autodesk to register and/or issue your activation code, to keep you informed about our products and services, and to ensure that you benefit from being an authorized Autodesk user. Autodesk does not sell or otherwise provide your information to anyone outside of Autodesk or our Authorized Business Partners. If you wish to correct your registration data, please click the link below to contact Autodesk or contact your local Autodesk office.

Log-in to Autodesk

Don't have an Autodesk User ID?
Signing up is quick and easy!
[Create User ID Now](#)

User ID

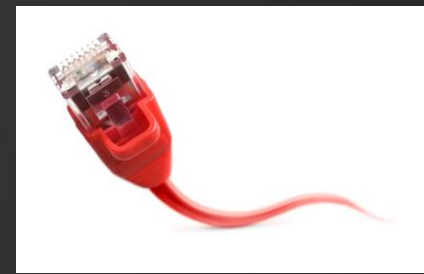
Password

Remember Me

[Forgot your User ID?](#)
[Forgot your Password?](#)

© Copyright 2007 Autodesk, Inc. All rights reserved. [Legal Notices & Trademark](#) - [Privacy Policy](#) - [Contact Autodesk](#)

OLT Export – Export the license



Register Today

Autodesk

License Export

Product:	ACD
Serial Number:	349-1 [REDACTED]

Exporting the license will deactivate the product on your computer.
To import the license, the product must be installed with this serial number. You will need Login ID and password.

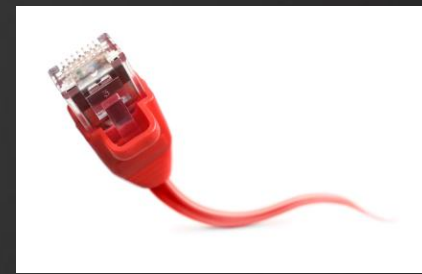
Click close if you wish to log out and not export the license

Make the license available as a public import.

Using this option allows someone with this serial number to import the license using their own Login ID and password.

© Copyright 2007 Autodesk, Inc. All rights reserved. [Legal Notices & Trademark](#) - [Privacy Policy](#) - [Contact Autodesk](#)

OLT Export – Exporting ...



Register Today

Autodesk

License Export

Product:	ACD
Serial Number:	349-1 [REDACTED]

Exporting the license will deactivate the product on your computer
To import the license, the product must be installed with this serial number. You will need Login ID and password.

Click close if you wish to log out and not export the license

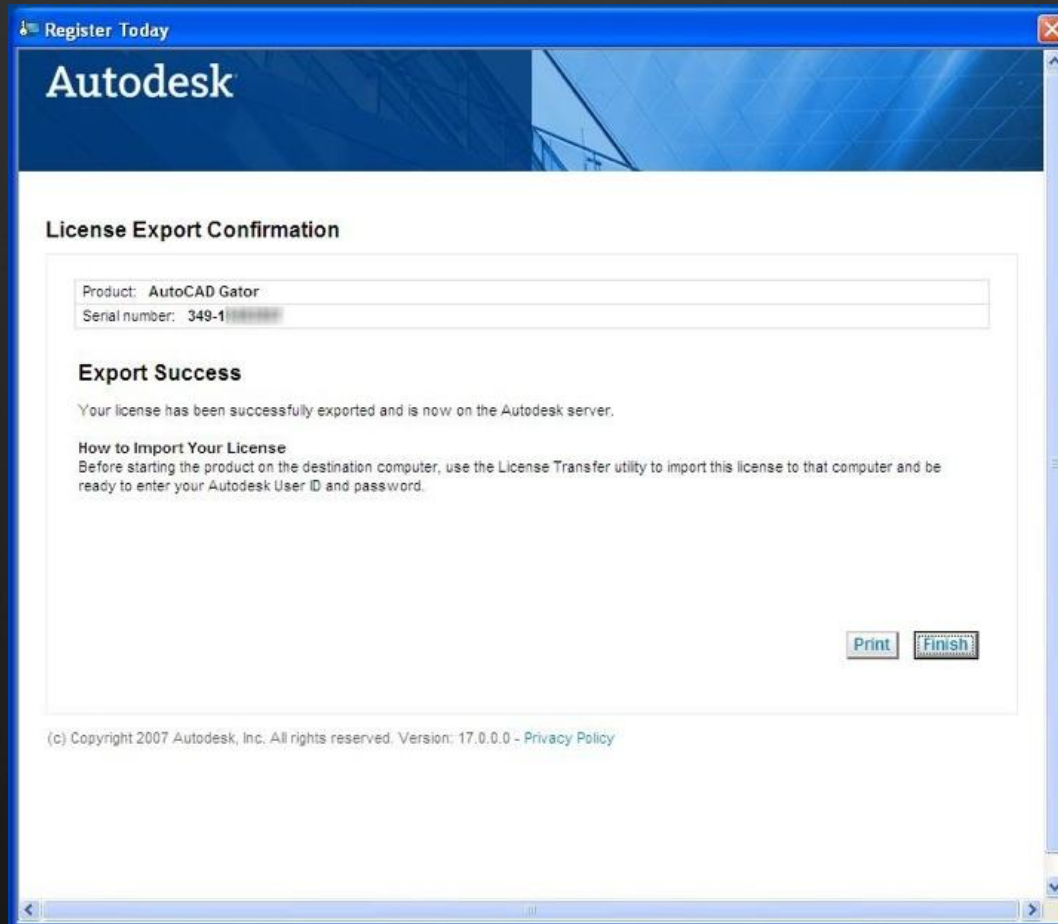
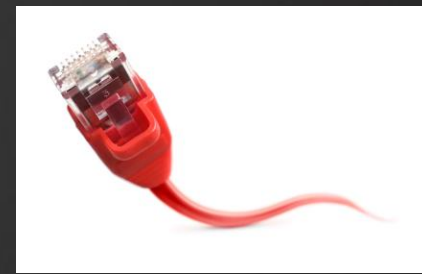
Make the license available as a public import.

Using this option allows someone with this serial number to import the license using their own Login ID and password.

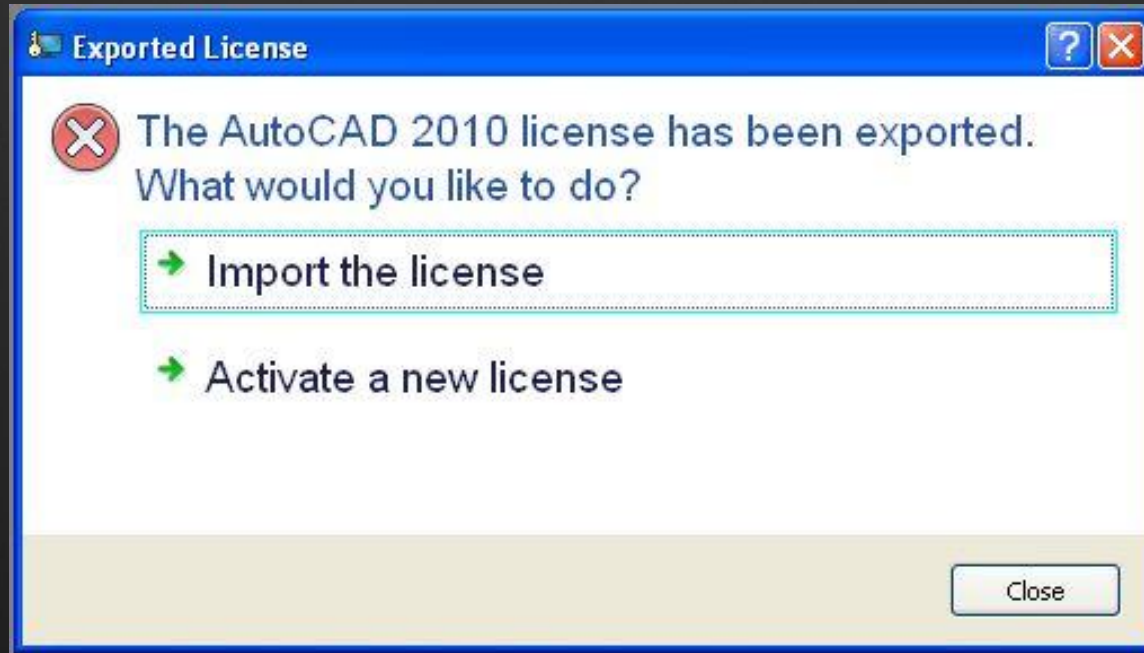
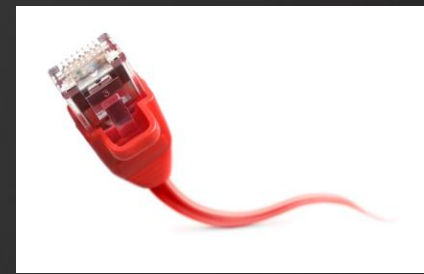
Please wait while License is exported

© Copyright 2007 Autodesk, Inc. All rights reserved. [Legal Notices & Trademark](#) - [Privacy Policy](#) - [Contact Autodesk](#)

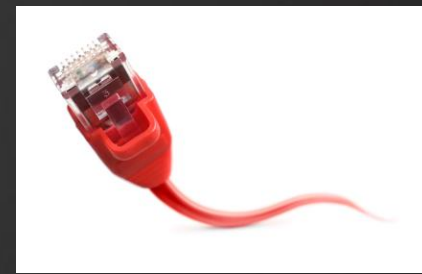
OLT Export – Successful Export



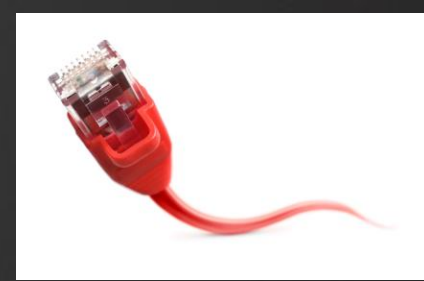
OLT - Launching the Product after Export



OLT – Import a license



OLT Import – Log In



Register Today

Autodesk

Log In

Are you a New User? Click "Create User ID Now".

Please enter your User ID, Password and click "Log In" to access the Autodesk service you requested. You can use your existing Subscription Center or Partner Center User ID and Password.

Registered Autodesk users are able to access various Autodesk services including:

- Product Registration and Activation
- Subscription Center
- Partner Center
- Web Support

Users from Japan with an existing Contact ID, please [click here](#).

The information you provide will be used by Autodesk to register and/or issue your activation code, to keep you informed about our products and services, and to ensure that you benefit from being an authorized Autodesk user. Autodesk does not sell or otherwise provide your information to anyone outside of Autodesk or our Authorized Business Partners. If you wish to correct your registration data, please click the link below to contact Autodesk or contact your local Autodesk office.

Log-in to Autodesk

Don't have an Autodesk User ID?
Signing up is quick and easy!

[Create User ID Now](#)

User ID

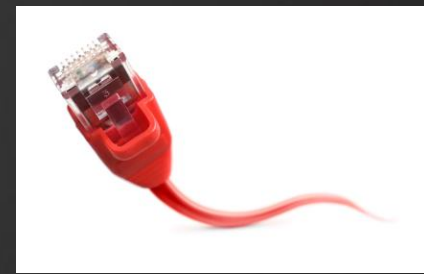
Password

Remember Me

[Forgot your User ID?](#)
[Forgot your Password?](#)

© Copyright 2007 Autodesk, Inc. All rights reserved. [Legal Notices & Trademark](#) - [Privacy Policy](#) - [Contact Autodesk](#)

OLT Import – Importing ...



Register Today

Autodesk

License Import

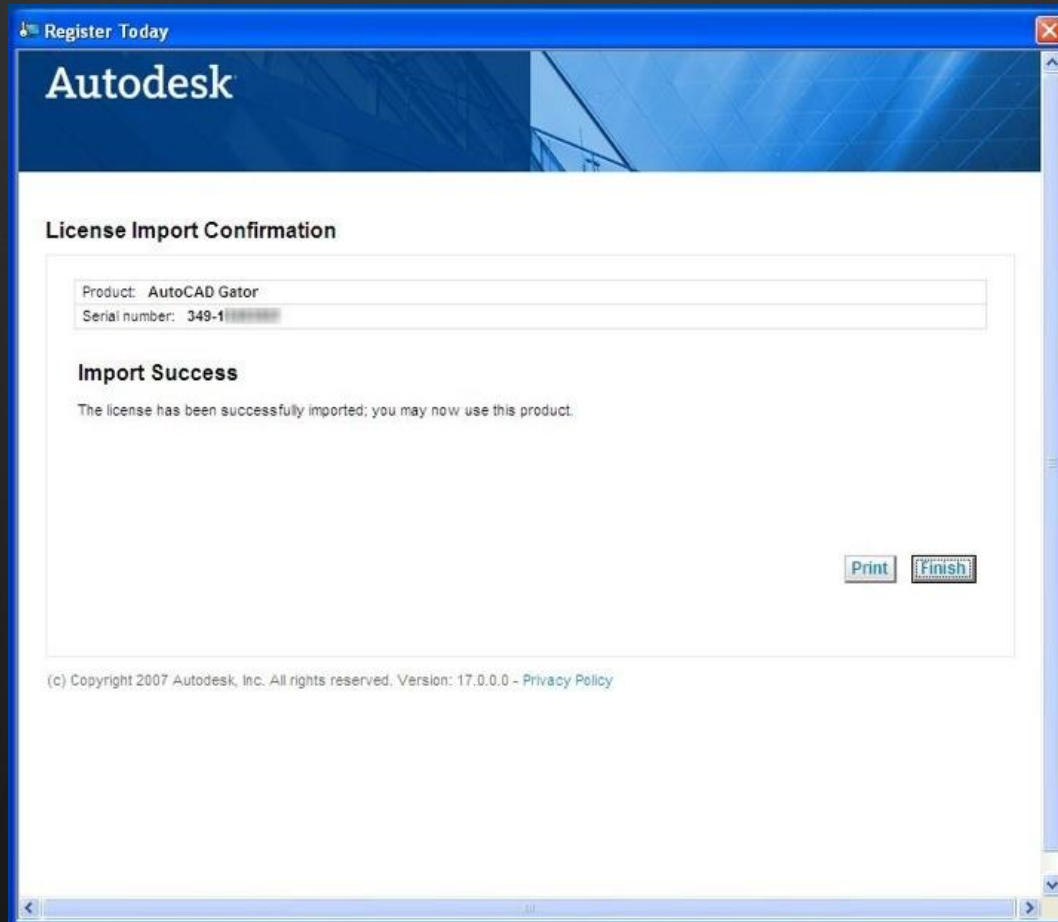
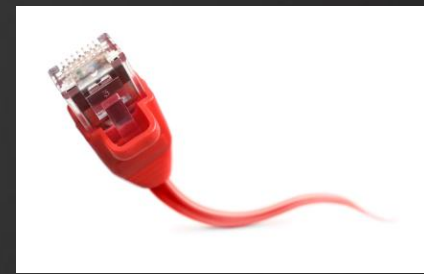
Product: ACD
Serial Number: 349-1

The license is being imported to this computer
This page will automatically update when the import completes

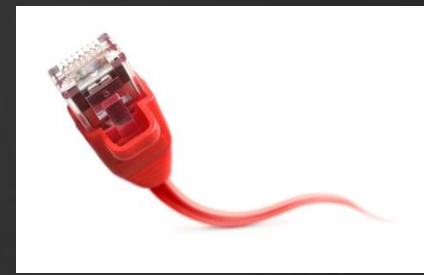
Please wait while License is imported

© Copyright 2007 Autodesk, Inc. All rights reserved. [Legal Notices & Trademark](#) - [Privacy Policy](#) - [Contact Autodesk](#)

OLT Import – Successful Import



Online License Transfer Requirements



- Must use the product-specific License Transfer Utility
- Standalone licenses only
- License must not be in use
- Must be same serial number to share an exported license
- Requires Internet connectivity
 - There is no offline method to transfer licenses
 - Alternatives? Buy a network license
- Support Responsibilities
 - GBS/ABC
 - Activations and license changes
 - Product Support
 - Technical issues