

## Portable License Utility

### Info:

<http://usa.autodesk.com/adsk/servlet/ps/item?siteID=123112&id=10245824&linkID=9240817>

**Remark:** Licenses can only be transferred between identical AutoCAD releases. So don't transfer a license from LT 2008 to a PC with only an LT 2009 installed.

### Procedure

#### **Step by Step Guide to transferring a Standalone License using the PLU**

This guide explains the step by step procedure of using the Portable License Utility (PLU) to transfer a license between two machines. For the purposes of this document the machines will be known as Machine A (Source) Machine B (Target).

Screenshots were made in AutoCAD 2004, but all still counts for more recent versions of AutoCAD Full as well as LT.

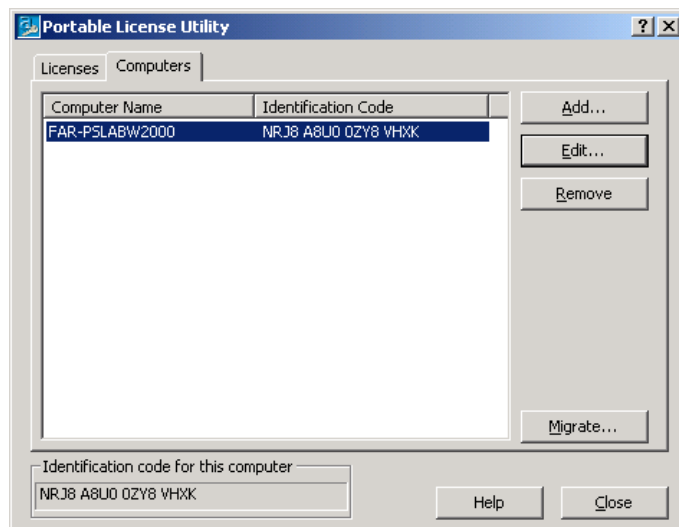
#### **Step 1**

On Target machine (Machine B) run the PLU.

(Start  
Menu>Autodesk>AutoCAD  
2004> Portable License  
Utility)

Select Computers tab

Copy Computer Identification  
Code.



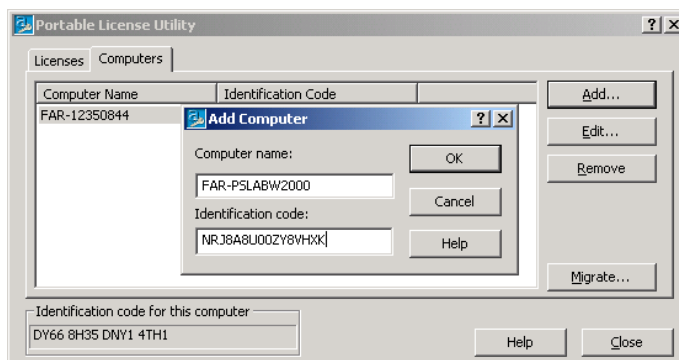
#### **Step 2**

On Source machine (Machine A) run the PLU

Select Computers Tab

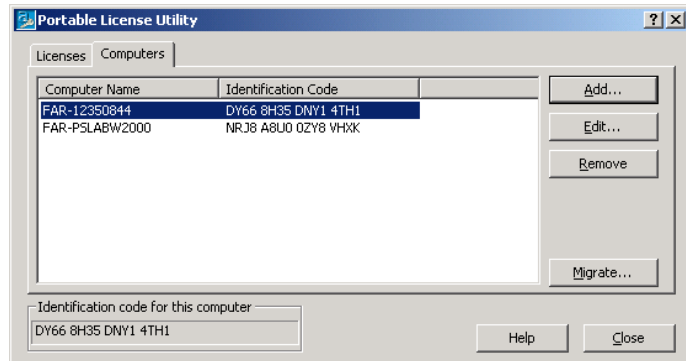
Select Add

Enter the Computer  
Identification Code and name  
of the Target machine.



### Step 3

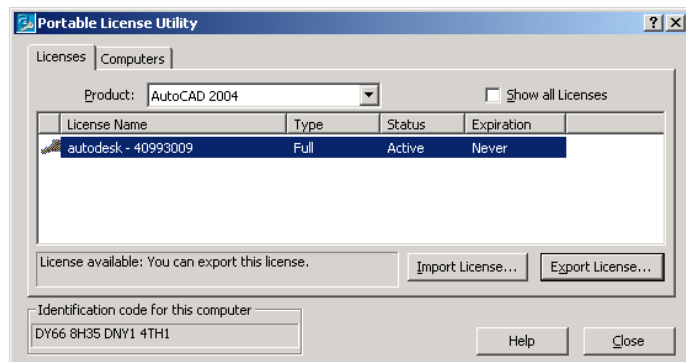
Target Machine is now added to the Computer List



### Step 4

On Source machine (Machine A) run the PLU

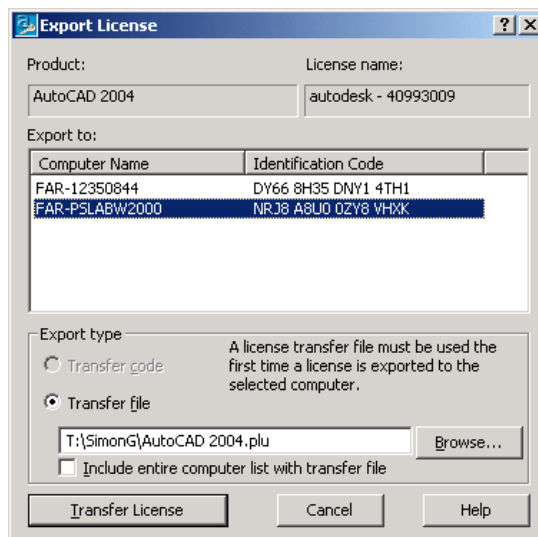
1. Select Licenses Tab
2. Select license to be exported
3. Select Export Button (or right click on license and select Export License)



### Step 5

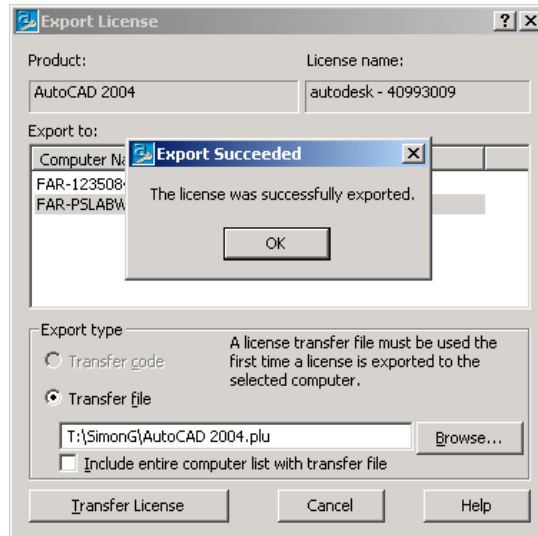
In Export License dialog select Target machine you wish to export license to. The first time you must transfer by file (Note Transfer Code is greyed out)

1. Select Transfer License



## Step 6

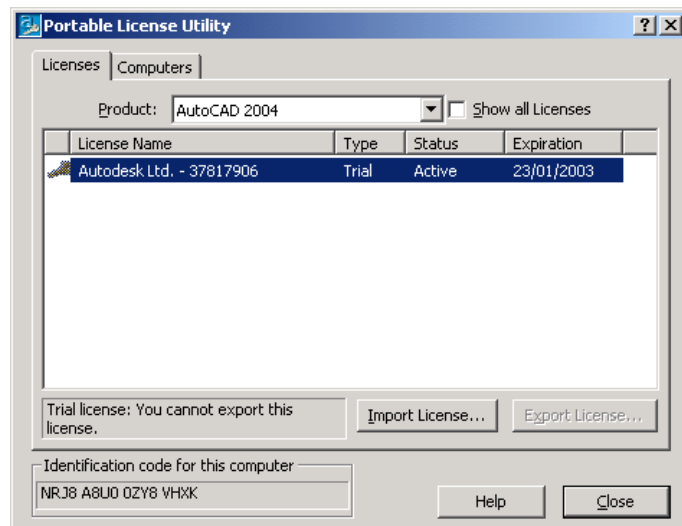
The license has now been exported to the Target machine.



## Step 7

On Target machine run PLU

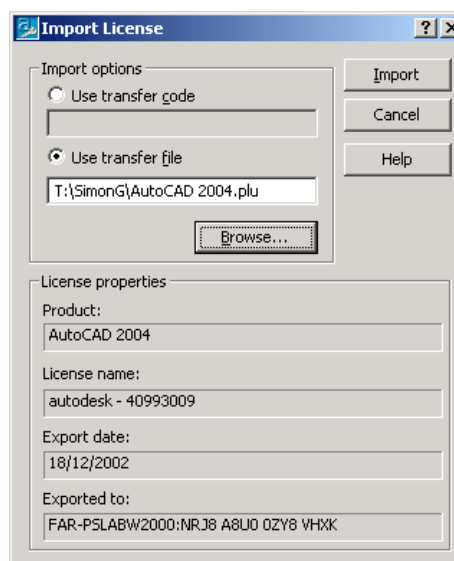
1. Select Import License



## Step 8

In Import License Dialog enter transfer code or select transfer file.

1. Select Import



## Step 9

License will be imported.  
Product can then run on  
Target machine.

